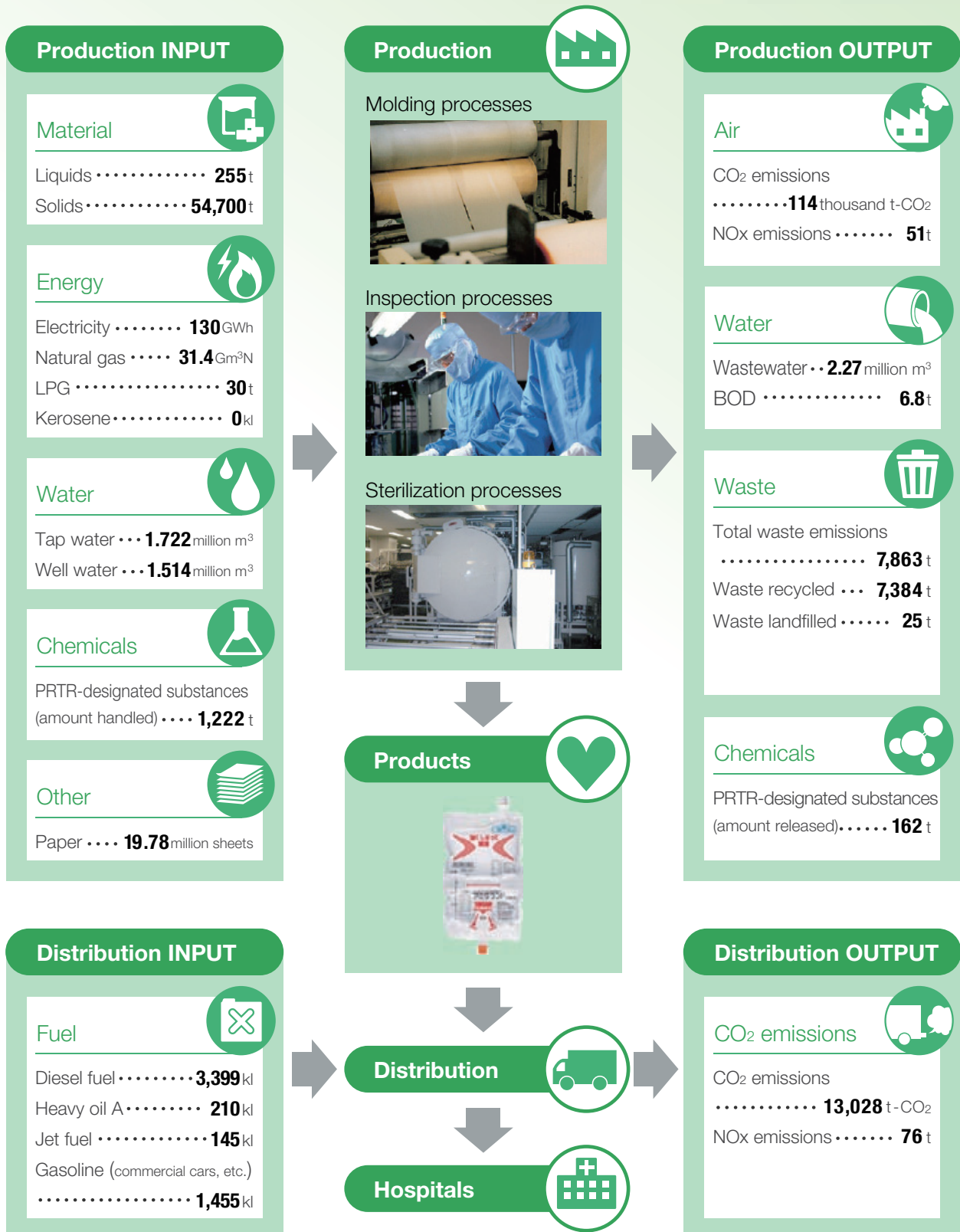


17. Business Activities and Material Flows

Terumo determines the environmental impact associated with production processes that use inputs of energy and raw materials and create outputs like carbon dioxide, wastewater and waste, and uses these values as indicators. We are striving to reduce our environmental impact in this manner.



* NOx emitted in distribution were calculated using the coefficients in the "Environmental Activities Evaluation Program (April 2002)" developed by the Ministry of the Environment.